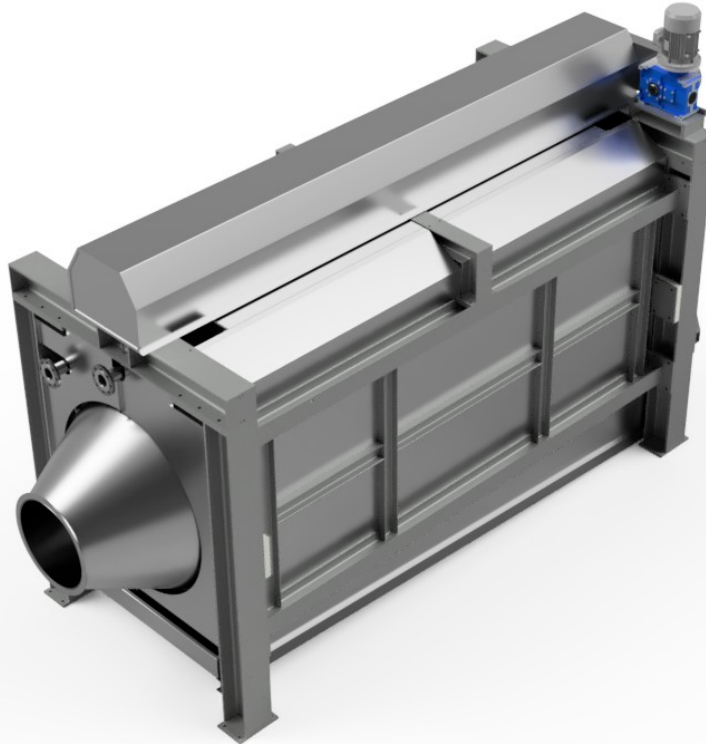


CONICDRUM CD/F



1. PULPER M³

2. TYPES OF RAW MATERIALS USED

3. DAILY PRODUCTION

4. RATE OF CONTAMINATION

**5. ACCESSORIES OF THE EXISTING PULPERS:
RAGGER/SAS HEAVY IMPURITIES/POIRE/HYDRAPURGE**

6. EXISTING ELEVATION BETWEEN SCREEN AND FLOOR